

North Lake –Waukesha County

June 19, 2024 Treatment Map



Area	Acres
1	5.0
2	0.5
3	0.5
4	1.1
5	1.5
6	2.0
7	0.2
8	0.4
Total	11.2

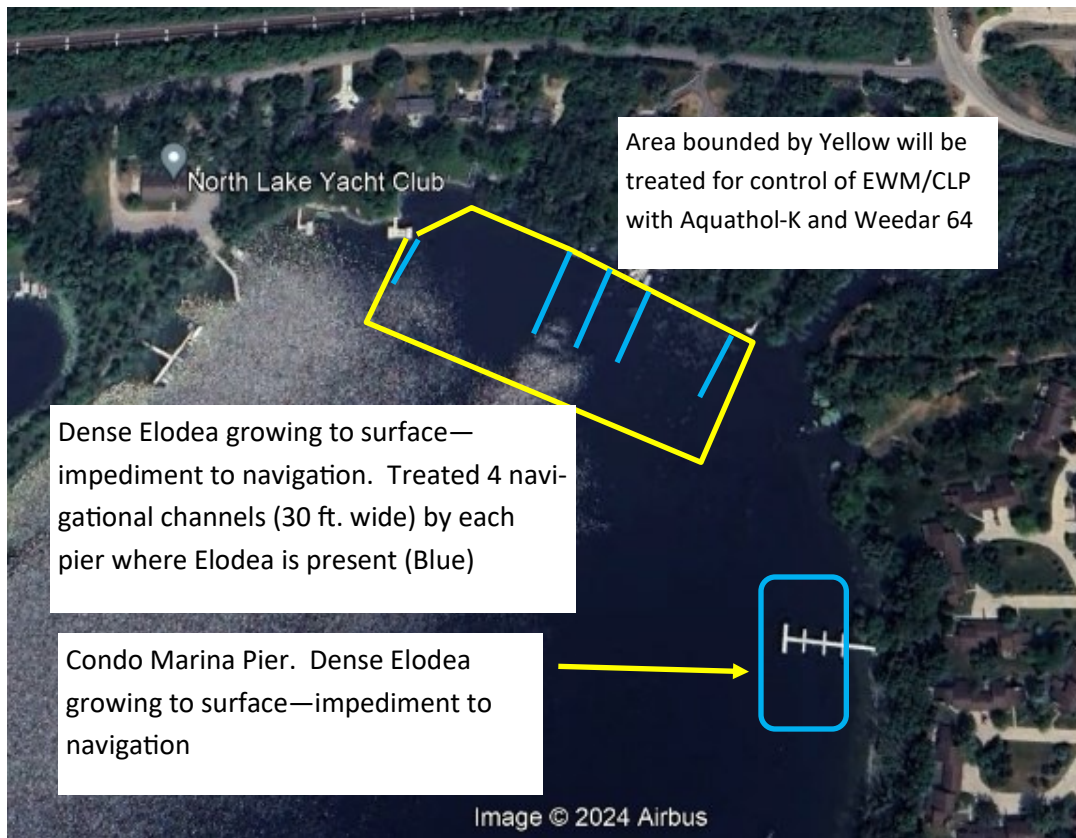
Curlyleaf pondweed was treated in all of Area 1, and portions of 5 & 6 with Aquathol-K.. Total of 8 acres was treated.

Eurasian watermilfoil was treated in all of Areas 2, 3, 4 and 4.5 acres of Area 1, and 0.2 acres in Area 7 . A total of 6.8 acres were treated.

Tribune was used to treat Elodea immediately adjacent to Condos in Area 1 (highlighted in Blue), and to create channels where Elodea was topped out and a significant impediment to navigation. A 30' wide channel was created within Area 8 as well. Approximately 1.5 acres in total was treated.).

Details on Areas 1 & 4 on following pages.

Detail for Area #1



Detail for Area #4



Detail for Area #8

Navigation Lane—30 ft. wide



Aquatic Plant Species Treated
June 19, 2024 North Lake Treatment

Curly-leaf pondweed—Aquatic Invasive



Eurasian water-milfoil—Aquatic Invasive



Elodea—native

